

BATTERY CLAMP FOR CF8 FUSE RATED 58V

RoHS



Specifications

Material: Brass G-Cu Zn 33 Pb
Starting Torque: 10 Nm at batterypole, 12 Nm Compact Fuse

Ordering Information

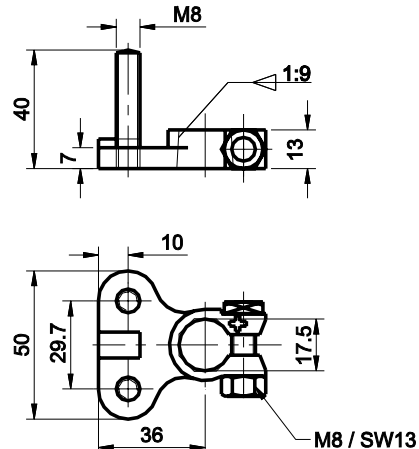
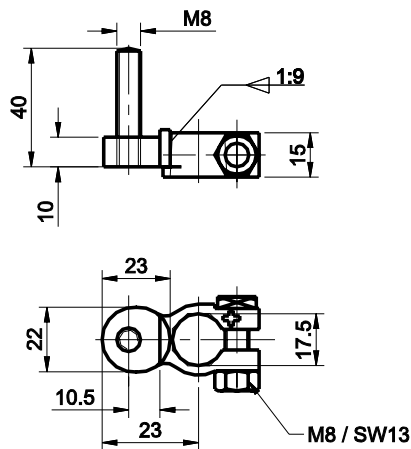
Part Number	Package Size
255.1000.0001	100
255.2000.0001	50

Description

Battery clamp for CF8 Fuse links. Both battery clamps have an integrated twisted protection for the CF8-fuse link.

Dimensions

Dimensions in mm



Ratings

Part Number	Description	Fuse Rating
255.1000.0001	Battery clamp 1 pole	max. 250 A (23+-5°C)
255.2000.0001	Battery clamp 2 pole	max. 250 A (23+-5°C)

CF8-fuses links only in conjunction with Insulating nuts 255.0808.0001, 255.0899.4001 or 255.0899.5001.
Corresponding CF8-fuse links see Section "Bolt-Down Fuses." If the ring terminal makes contact with the terminal fuse stud, the fuse is bypassed and is not protecting the circuit. Insert CF8-Fuse links only in conjunction with the insulating nut see next page.